

FL SWITCH 1104-4POE REG - Industrial Ethernet Switch



1473642

<https://www.phoenixcontact.com/pc/products/1473642>

Please be informed that the data shown in this PDF document is generated from our online catalog. Please find the complete data in the user documentation. Our general terms of use for downloads are valid.



Unmanaged Switch 1000 REG, 4 RJ45 ports 10/100/1000 Mbps, REG design in accordance with DIN 43880

Product description

8-port Ethernet switch with four PoE ports according to 802.3at with an output power of up to 30 W for building installation in REG format. With four RJ45 ports both above and below the touch protection cover. With four PoE ports according to 802.3 at with an output power of up to 30 W

Your advantages

- REG design in accordance with DIN 43880
- POE status LED per port
- Auto negotiation
- Automatic detection of IEEE 802.3at or 802.3af powered devices
- Autocrossing

Commercial data

Item number	1473642
Packing unit	1 pc
Minimum order quantity	1 pc
Product key	DNN412
GTIN	4063151884864
Weight per piece (including packing)	287 g
Weight per piece (excluding packing)	208 g
Customs tariff number	85176200
Country of origin	TW

FL SWITCH 1104-4POE REG - Industrial Ethernet Switch

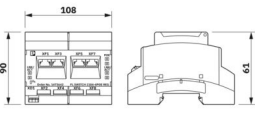


1473642

<https://www.phoenixcontact.com/pc/products/1473642>

Technical data

Dimensions

Dimensional drawing	
Width	108 mm
Height	90 mm
Depth	62 mm
Note on dimensions	6 HP

Notes

General	Support by phone or on-site (fee is charged)
---------	--

Material specifications

Housing material	PC (polycarbonate)
------------------	--------------------

Mounting

Mounting type	DIN rail mounting
---------------	-------------------

Interfaces

Ethernet

Number of interfaces	8
Connection method	RJ45
Note on the connection method	Auto negotiation and autocrossing
Transmission speed	10/100/1000 Mbps
Transmission physics	Ethernet RJ45
Transmission length	100 m (per segment)
Signal LEDs	LNK/ACT, POE
No. of channels	4 (RJ45 ports)

Ethernet (PoE)

Number of interfaces	4
Connection method	RJ45
Transmission length	100 m (Between transmitter / receiver)
Signal LEDs	LNK/ACT, POE
Number of interfaces	4
Transmission speed	10/100/1000 Mbps
No. of channels	4 (RJ45 POE ports)

Product properties

Product type	Switch
--------------	--------

FL SWITCH 1104-4POE REG - Industrial Ethernet Switch



1473642

<https://www.phoenixcontact.com/pc/products/1473642>

Product family	Unmanaged Switch 1000 REG
Type	Stand-Alone
MTTF	802.8 Years (SN 29500 standard, temperature 25°C, operating cycle 21%)
	351.4 Years (SN 29500 standard, temperature 40°C, operating cycle 34.25%)
	94.1 Years (SN 29500 standard, temperature: 50°C, operating cycle: 100%)
Special properties	REG design in accordance with DIN 43880
Signal delay	Store and Forward mode, 10/100 Mbps, depending on the frame size

Switch functions

Basic functions	Unmanaged switch
	Autonegotiation
	Store and Forward switching mode
Status and diagnostic indicators	LEDs: U _S (voltage supply), Link/Activity and PoE per Ethernet port

Security functions

Basic functions	Unmanaged switch
	Autonegotiation
	Store and Forward switching mode

Electrical properties

Local diagnostics	US Supply voltage Green LED
	PoE PoE detection Yellow LED
	LNK/ACT Link status/data transmission Green LED
Maximum power dissipation for nominal condition	7.6 W
Test voltage	500 V DC
Test section	Between the Ethernet ports 1500 V AC 1 min.
	24 V supply (US) / FE 500 V DC 1 min.
Transmission medium	Copper

Supply

Supply voltage (DC)	54 V DC
Supply voltage range	48 V DC ... 55 V DC
Max. current consumption	2.5 A (at U _S = 52 V DC, data transmission 1 Gbps)

Connection data

Connection method	Spring-cage connection
Conductor cross section, rigid	0.2 mm ² ... 1.5 mm ²
Conductor cross section, flexible	0.5 mm ² ... 1.5 mm ²

Environmental and real-life conditions

Ambient conditions

Degree of protection	IP20
----------------------	------

FL SWITCH 1104-4POE REG - Industrial Ethernet Switch



1473642

<https://www.phoenixcontact.com/pc/products/1473642>

Ambient temperature (operation)	5 °C ... 50 °C
Ambient temperature (storage/transport)	-40 °C ... 70 °C
Altitude	max. 2000 m
Permissible humidity (operation)	10 % ... 95 % (non-condensing)
Permissible humidity (storage/transport)	5 % ... 95 % (non-condensing)
Air pressure (operation)	86 hPa ... 108 kPa (1500 m above sea level)
Air pressure (storage/transport)	66 hPa ... 108 kPa (3500 m above sea level)

EMC data

Conformance with EMC directives	IEC 62368-1
---------------------------------	-------------

System properties

Functionality

Basic functions	Unmanaged switch
	Autonegotiation
	Store and Forward switching mode

Signaling

Status display	LEDs: U _S (voltage supply), Link/Activity and PoE per Ethernet port
----------------	--

FL SWITCH 1104-4POE REG - Industrial Ethernet Switch

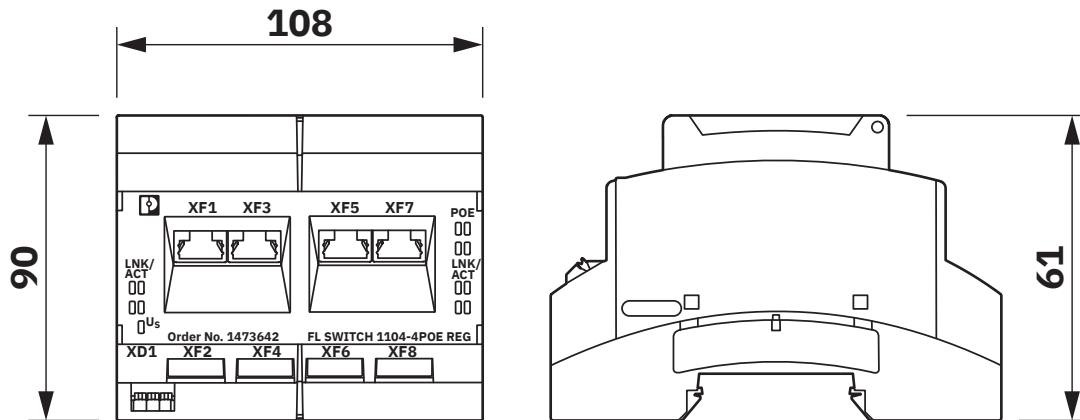


1473642

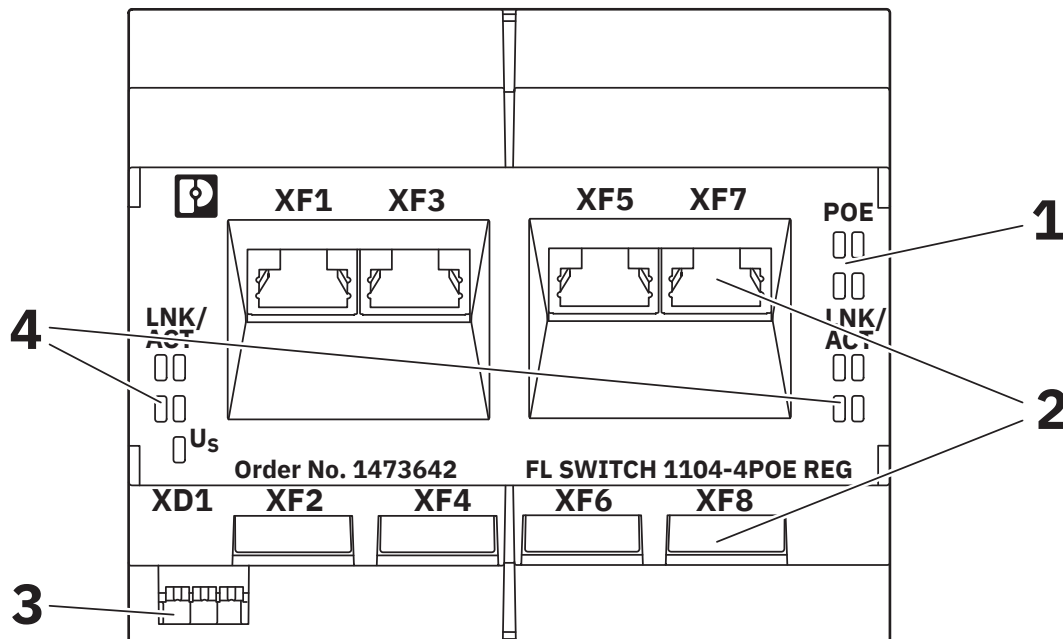
<https://www.phoenixcontact.com/pc/products/1473642>

Drawings

Dimensional drawing



Schematic diagram



FL SWITCH 1104-4POE REG - Industrial Ethernet Switch



1473642

<https://www.phoenixcontact.com/pc/products/1473642>

Classifications

ECLASS

ECLASS-11.0	19170402
ECLASS-12.0	19170402
ECLASS-13.0	19170402

FL SWITCH 1104-4POE REG - Industrial Ethernet Switch



1473642

<https://www.phoenixcontact.com/pc/products/1473642>

Environmental product compliance

EU RoHS

Fulfills EU RoHS substance requirements	Yes
Exemption	15(a), 7(a), 7(c)-I

China RoHS

Environment friendly use period (EFUP)	EFUP-50
	An article-related China RoHS declaration table can be found in the download area for the respective article under "Manufacturer declaration". For all articles with EFUP-E, no China RoHS declaration table issued and required.

EU REACH SVHC

REACH candidate substance (CAS No.)	Lead(CAS: 7439-92-1)
-------------------------------------	----------------------

FL SWITCH 1104-4POE REG - Industrial Ethernet Switch



1473642

<https://www.phoenixcontact.com/pc/products/1473642>

Accessories

STEP3-PS/1AC/48DC/2.5/PT - Power supply unit

1285035

<https://www.phoenixcontact.com/pc/products/1285035>



Primary-switched power supply unit, STEP POWER, Push-in connection, DIN rail or direct mounting, input: 1-phase, output: 48 V DC / 2.5 A, adjustable from 48 V DC ... 56 V DC, PoE application up to 120 W

DT-LAN-CAT.6+ - Surge protection device

2881007

<https://www.phoenixcontact.com/pc/products/2881007>



Surge protection in accordance with Class E_A (CAT6_A), for Gigabit Ethernet (up to 10 Gbps), token ring, FDDI/CDDI, ISDN, and DS1. Suitable for Power over Ethernet (PoE++ / 4PPoE) "Mode A" and "Mode B". RJ45 attachment plug with separate grounding cable and ground connection snap-on foot for NS 35 DIN rails.

FL SWITCH 1104-4POE REG - Industrial Ethernet Switch



1473642

<https://www.phoenixcontact.com/pc/products/1473642>

FL CAT5 PATCH 0,5 - Patch cable

2832263

<https://www.phoenixcontact.com/pc/products/2832263>

Patch cable, CAT5, assembled, 0.5 m



FL CAT5 PATCH 1,0 - Patch cable

2832276

<https://www.phoenixcontact.com/pc/products/2832276>

Patch cable, CAT5, assembled, 1 m



FL SWITCH 1104-4POE REG - Industrial Ethernet Switch



1473642

<https://www.phoenixcontact.com/pc/products/1473642>

FL CAT5 PATCH 2,0 - Patch cable

2832289

<https://www.phoenixcontact.com/pc/products/2832289>

Patch cable, CAT5, assembled, 2 m

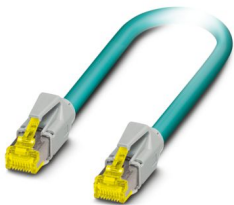


NBC-R4AC-R4AC-IE8A/.../... - Patch cable

1411854

<https://www.phoenixcontact.com/pc/products/1411854>

Patch cable, degree of protection: IP20, number of positions: 8, 10 Gbps, CAT6_A, cable outlet: straight, Ethernet



FL SWITCH 1104-4POE REG - Industrial Ethernet Switch



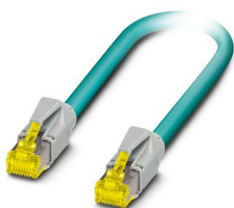
1473642

<https://www.phoenixcontact.com/pc/products/1473642>

NBC-R4AC/10G-R4AC/10G-94F/2,0 - Patch cable

1408360

<https://www.phoenixcontact.com/pc/products/1408360>

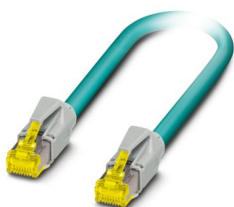


Patch cable, CAT6_A, 4-pair, shielded, connection not crossed (line), assembled at both ends with RJ45/IP20 connectors, outer sheath material: PUR, length: 2.0 m

NBC-R4AC/10G-R4AC/10G-94F/3,0 - Patch cable

1408365

<https://www.phoenixcontact.com/pc/products/1408365>



Patch cable, CAT6_A, 4-pair, shielded, connection not crossed (line), assembled at both ends with RJ45/IP20 connectors, outer sheath material: PUR, length: 3.0 m

FL SWITCH 1104-4POE REG - Industrial Ethernet Switch



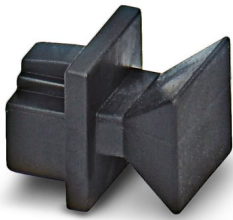
1473642

<https://www.phoenixcontact.com/pc/products/1473642>

FL RJ45 PROTECT CAP - Dust protection

2832991

<https://www.phoenixcontact.com/pc/products/2832991>



Dust protection caps for RJ45 socket

Phoenix Contact 2024 © - all rights reserved

<https://www.phoenixcontact.com>

PHOENIX CONTACT GmbH & Co. KG

Flachsmarktstraße 8

D-32825 Blomberg

+49 (0) 5235-3 00

info@phoenixcontact.com